

# ScriptLogic Asset Manager for VMware® ESX/ESXi or vCenter

© 2010 ScriptLogic Corporation  
ALL RIGHTS RESERVED.

*ScriptLogic, the ScriptLogic logo and Point,Click,Done! are trademarks and registered trademarks of ScriptLogic Corporation in the United States of America and other countries.*

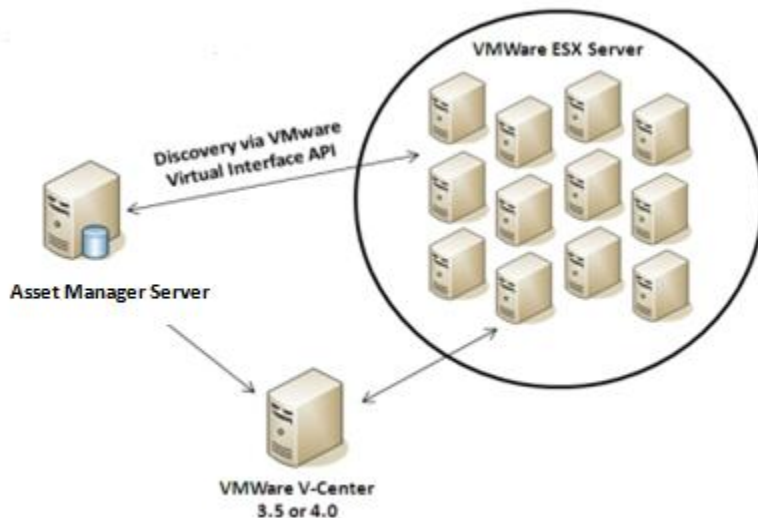
*VMware, and other VMware product names referenced herein are trademarks of VMware, Inc. in the US and/or other jurisdiction. Citrix, XenApp and other Citrix product names referenced herein are trademarks of Citrix Systems, Inc. in the US and other countries. All other trademarks and registered trademarks are property of their respective owners.*

## Software Asset Management (SAM) challenges around Virtualization

Many organizations today have implemented a mixture of physical and virtual environments to lower their Total Cost of Ownership (TCO) and improve the performance and flexibility of their IT infrastructure. Though the benefits of virtualization are easily recognized, the licensing complexities and compliance issues are not easily managed by companies. Administrating software licenses in virtual environments is difficult because it is easy to create new virtual machines running copies of operating systems and software applications. Software publishers have also adopted licensing rules for virtual environments that add significant complexity to the already complicated task of mapping licenses. For example, some vendor licenses require knowledge of the number of VMs associated with a given physical server. Other types of licenses require knowledge of the underlying physical hardware such as the processor speed, number of processors, etc. Some software vendors place license restrictions on the frequency of application transfers from one server to another. Since applications are contained within a VM, it's easy to violate this mobility rule and drift out of license compliance. Being significantly under-licensed due to virtualization can lead to increased licensing costs and software audit fees, which ultimately do not provide any significant benefit for the company.

### Asset Manager VMware Service Architecture

**ScriptLogic's Asset Manager** is based on state of the art technology that understands the complex license agreements and delivers complete compliance reports for your physical and virtual software inventory. It supports device, processor and virtual based licenses. It is implemented as a service, running on Asset Manager server talking directly to the VMware host. The service communicates with VMware's API via ESX/ESXI server or vCenter. Hardware configuration data is replicated for the individual VMware ESX/ESXI servers into Asset Manager.



Asset Manager service for VMware ESX/ESXI offers a more sophisticated and intelligent tool than other providers since it operates directly via the VMware vCenter rather than on the individual VMware ESX/ESXI servers or virtual servers. This saves time and improves virtual environment transparency. If VMware vCenter is not available, Asset Manager communicates directly with the ESX/ESXI servers.

All updates and services are done from Asset Manager, so it is not necessary to add additional hard drive space. It is the only SAM product on the market that determines the connection between VMware ESX/ESXI and the host, which results in a precise license entitlement. Inventory and usage for each virtual server is gathered by Asset Manager, which provides good insight on mapping which applications are installed and how they are used on virtual machines. The software inventory includes in-depth analysis, including software DNA, file evidence and WMI data. The list of installed software can be scanned at every login and in seconds is available in the Asset Manager system. Hardware and file scans is set up in the same way (every login, daily, monthly, etc).

## Summary of Benefits

ScriptLogic's Asset Manager is a comprehensive cost-effective software product that helps implement SAM in companies. It's a centralized, real time application for organizations to identify and monitor software applications and licenses being used on physical servers, desktops, VMware® and published applications in Citrix® XenApp™. So start tracking your license costs, usage and begin calculating potential savings today.

**Get more information at [www.scriptlogic.com/assetmanager](http://www.scriptlogic.com/assetmanager)**